

# Industrial Ozone Generator

## Industrial Ozone Generator

These medium frequency ozone generators are designed to provide the most efficient and reliable ozone generation commercially available. Several sizes available for any ozone application.



### Features

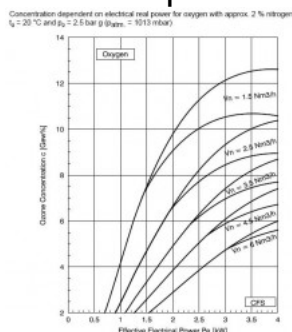
- up to 10% wt. ozone concentration
- compact design allows use in small spaces
- overheat protection feature
- minimal heat generation due to water cooling jackets surrounding corona cells
- 4-20 mA input proportional control
- simple installation & startup

Product ID: **CFS-7**  
Lead Time: **4 weeks**

### Specifications

Ozone Concentration	3-13% by wt. (fully adjustable)
Ozone Output	12.7 lbs/day (240 gm/hr) @ 3% by wt. conc. from 3.9 SCFM (6.2 m <sup>3</sup> /hr) dry air 25.2 lbs/day (476 gm/hr) @ 6% by wt. conc. from 3.4 SCFM (5.4 Nm <sup>3</sup> /hr) of 90% oxygen
Cooling Water	2.2 GPM @ 55-deg F (8.3 lpm @ 13-deg C)
Power Requirements	460V 3-Phase, 60Hz (Foreign voltages available)
Power Consumption	4.3 kW
Feed gas connection	1/2" FPT
Ozone Connection	1/2" FPT
Cooling Water In/Out	1/2" FPT
Gas Flow (O <sub>2</sub> )	22-218 SCFH (10 - 103 lpm) [adjustable]
Gas Flow (Air)	27 - 270 SCFH (13 - 128 lpm) [adjustable]
Panel Mounted Components	Flowmeter with control valve, pressure regulator & pressure gauge. All are on front panel
Ozone Output Control	Fully adjustable with push button up & down
Remote Operation	Yes - 4-20mA or manual control easily selected with toggle switch on front panel
Operating Temperature	41-104 deg F (5-40 deg C)
Humidity	less than 65% annual average

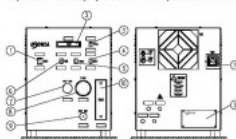
### CFS-7 Output Chart



The chart shows the varying ozone outputs of the CFS-7 with different oxygen flows & power applied.

### CFS-7 Component Locations & Operation

Operation and Display Elements and Operational Modes

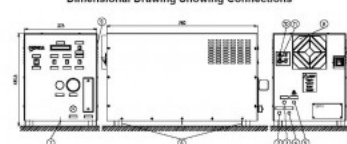


- Capitons:
- 1 10R1 Rating plate with CE marking
  - 2 10S1 Main switch, red "EMERGENCY STOP"
  - 3 10S4 Display, LCD/LED, Mode, function that enables: Failures
  - 4 10S3 Switch, black "TEST POINT LOCAL UPS/DOWN"
  - 5 10S2 Switch, black "TEST POINT REMOTE"
  - 6 10S1 Switch, black "POWER SUPPLY ON"
  - 7 POC201 Pressure control valve
  - 8 POC1 Gas pressure gauge
  - 9 POC201 Hand operated control valve
  - 10 FOC1 Gas flow meter
  - 11 10R1 Fuse holder
- The set value for DC rating, which affects the ozone production rate, can be adjusted locally or remotely. The gas flow, however, can only be regulated on the apparatus.

Left image shows front panel; right image shows back panel. All controls are on front panel for easy access & adjustment. Many controls allow the user to fine tune the ozone output or feed gas flow rate to exact requirements.

### CFS-7 Connection Drawing

Dimensional Drawing Showing Connections



- Capitons:
- 1 Mains socket
  - 2 Cooling media inlet
  - 3 Cooling media outlet
  - 4 Feedgas inlet
  - 5 Ozone gas outlet
  - 6 Rubber feet
  - 7 Condensate drain
  - 8 Air fan inlet (minimum clearance 200mm)
  - 9 Air outlet (minimum clearance 200mm)
  - 10 Plug (X2) for external set value
  - 11 Plug (X7) for external signalisation

The external components can be seen showing the many different features of the CFS-7. This unit is fully adjustable for any large scale ozone application.